

product catalog

Medical Training Devices



2015

With a secure feeling to the first OP

Operative interventions on patients require mastery of the means employed:

- the mastery of technical means employed,
- the functional handling of the instruments and
- the knowledge of the medical-methodical procedure.

We as company SAMED GmbH Dresden have made it to our mission to provide training equipment for learning and practicing operative, surgical techniques. In order to be always remains technically up to date, we work together with German and international companies such as Olympus, Boston Scientific and many more.



In our current product catalog you can find the best trainers for resection and endo-urological procedures and our new two training equipment. The laparoscopic trainer is one of these new developments. It allows a variety of possible applications from the first cut to the last seam. The PCNL trainer is also a new development from SAMED GmbH Dresden. It was developed in response to many requests from hospitals and industry. The wide spectrum of real-world applications will convince you.

Our service includes both the sale and the temporary use of our training equipment. We manufacture individual devices, complete workstations and to make a project of special training centers.

So we create the condition that every future operating surgeon mastered with a good conscience, its first operation on the patient.

I look forward to working with you.

Yours

A handwritten signature in blue ink, appearing to be "K. Forke".

Dr. Ing. habil. K. Forke
Managing Director

We ship worldwide!

We operate internationally so we could expand our customer base in recent years considerable. Through long-term cooperation with our shipping partners we can guarantee a fast and reliable delivery worldwide.



Our many satisfied customers speak for themselves:

American Medical Systems Europe, Netherlands
Boston Scientific
Cook Medical Europe Ltd., Irland
ERBE Elektromedizin GmbH, Tübingen
GM Medizintechnik, Österreich
Clinic for Urologie und Andrologie Salzburg, Österreich
Landeskrankenhaus St. Pölten - Lilienfeld, Österreich
LISA Laser products OHG, Germany
Lumenis Ltd
Muljibhai Patel Urological Hospital, Indien
Olympus Australien
Olympus America

Olympus China
Olympus Japan
Olympus Canada
Olympus Latin America Inc., Miami - USA
Olympus Netherlands
Olympus Winter & IBE Hamburg
Olympus Winter & IBE Berlin
Richard Wolf GmbH, Knittlingen
Salehiya Trading Est. Saudi Arabien
Uniklinikum Leipzig, Germany
Yuan Yu Industry Col, Ltd, Taiwan



Resection-Trainer LS 10 2.0

The resection-trainer is the ideal training tool for learning and training of resection in the prostate and bladder.

Methodologically trainable are the:

- bipolar resection
- vaporisation
- and laser resection

The operation cases **SIMPRO** and **SIMBLA** offer you in combination with the proven *SAMED*-training substrates prostate (**LSA/LSG**) und bladder (**LSB**) a practical training.

The appealing casing provides protection during laser application and also enhances the appearance of the equipment to optical.

LS 10-31 2.0

Art.-Nr. LS10310

- 1 Basic unit with casing
- 1 SIMPRO bipolar (operation case prostate)
- 1 SIMBLA bipolar (operation case bladder)
- 1 View trainer
- 1 Hole tool
- 1 Peristaltic pump, water tank, filter, hose system und drip tray

LS 10-21 2.0

Art.-Nr. LS10210

- 1 Basic unit without casing
- 1 SIMPRO bipolar (operation case prostate)
- 1 SIMBLA bipolar (operation case bladder)
- 1 View trainer
- 1 Hole tool
- 1 Peristaltic pump, water tank, filter, hose system und drip tray

Consumables:

For a realistic resection we recommend the proven **SAMED-training substrates**. Besides the unique tissue structure, the substrates provide realistic tissue characteristics for a perfect training in a bipolar application.



Training-Substrate prostate

- with anatomical structure (Capsule, Collikulus)
or without structure (non-specific)

LSG	non-specific, storable for 12 months	Art.-Nr. LS10300
LSA	with anatomical structure, storable for 6 months	Art.-Nr. LS10301



Training-Substrate bladder

- anatomical structure with embedded carcinomas
- storable for 3 months

LSB	for bipolar application	Art.-Nr. LS10302
LSB-PDD	for PDD - application	Art.-Nr. LS10304



Starter-Kit Substrate

Art.-Nr. LS 10305

- 6 LSG
- 6 LSA
- 3 LSB



Filter

Art.-Nr. LS 10203

- for collecting of substrate residues in the water tank



Hose system 2.0

Art.-Nr. LS10205

- for optimal flushing of the training system
- colour coding for easy installation



EndoUro-Trainer LS 50 2.0

The best training device for the training of cleanings, stent systems, catheterization, guide wire placement, flexible and semi-flexible ureteroscopy and more.

The training device on which no doctor comes over before the first operation.

The components bladder with ureter and renal pelvis as well as calyx system integrated and simulates a realistic anatomical environment.



LS 50 2.0

Art.-Nr. LS50400

- 1 Basic unit
- 1 Bladder with ureter
- 2 Kidneys (left, right) with integrated stones
- 1 Stenosis-Kit
- 1 Peristaltic pump, water tank, hose system und drip tray with holder
- 1 Ureter stone set

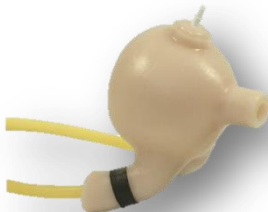


Spare parts kit

Art.-Nr. LS50520

- 1 Bladder with ureter
- 1 Kidney
- 1 Stenosis-Kit
- 1 Ureter stone set
- 1 Kidney stone set
- 1 Rubber ring set

Consumables:



Bladder

Art.-Nr. LS50501

- replaced quickly and easily
- bladder made of highly flexible material with ostia structures
- ureter with realistic sliding characteristics



LS 50 Hose system 2.0

Art.-Nr. LS50515

- for optimal flushing of the training system
- colour coding for easy installation



Ureter stone set

Art.-Nr. LS50511

- realistic imitations in various sizes
- content of 10 pieces



Kidney stone set

Art.-Nr. LS50510

- compatible, realistic imitations for introduction into the calyx system
- content of 10 pieces

PCNL-Trainer LS 40 2.0

Puncturing, to dilate with a bougie and the use of the ultrasound machine has not to be difficult.

The PCNL-trainer provides a unique opportunity to train specific methods of therapy and prepares the future operating surgeon optimally for the procedure.

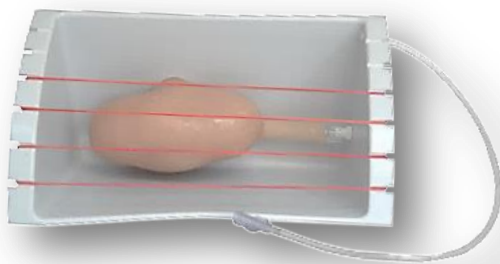


LS 40 2.0

Art.-Nr. LS40000

- 1 Basic unit
- 1 LS 40 Trainings-Kit: 1 LSN (Trainings substrate with kidney imitation)
 - 1 Layer of skin
 - 1 Absorber W
 - 1 Rubber ring set
 - 1 Bleeding syringe
- 1 Peristaltic pump, water tank, hose system und drip tray with holder

For an optimal an effective training, we have developed a module that is quick and easy replaceable.

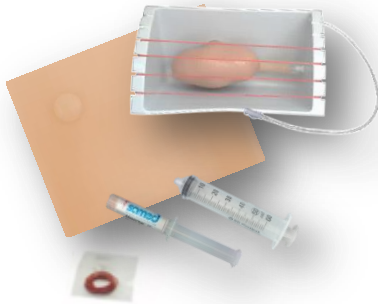


This module, the training substrate LSN, simulated in combination with the necessary accessories and the basic unit realistically the appropriate body cutout.

The PCNL-trainer has thus a unique opportunity to learn and train all the surgical techniques up to extract the kidney stones.

The training substrate LSN and the necessary accessories in addition, are included in the trainings-kit which is required for at least one training run.

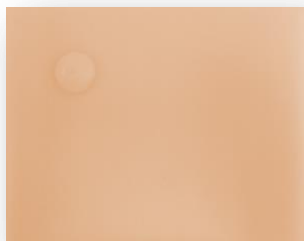
Consumables:



LS 40 Trainings-Kit

Art.-Nr. **LS40VM**

- include: 1 LSN (trainings substrate with kidney imitation)
1 Layer of skin
1 Absorber W
1 Rubber ring set
1 Bleeding syringe
- kidney body with detailed kidney structures integrated in the LSN; kidney stones and renal pelvis calculus inner
- can be used for at least one training run



Layer of skin

Art.-Nr. **LS40402**

- skin simulating cover for the LSN
- realistic haptic
- depending on the methode of dilation also used several times



Absorber W

1 PU (10 cartridges),
für 10 applications

Art.-Nr. **LS40556**



Ultrasonic gel

Art.-Nr. **LS40555**



Hose system 2.0

Art.-Nr. **LS40407**

- for optimal flushing of the training system
- colour coding for easy installation

Laparoscopy-Trainer LS 70 2.0

From making transversal cut to the stitches. The Laparoscopy Trainer provides a variety of training options.

Of the dry run to training on real tissue can be simulated with this trainer of laparoscopic surgery.



LS 70 2.0

Art.-Nr. LS70000

- 1 Basic unit
- 3 Training elements with working material (for threading, sewing and tension exercises)
- 1 Tray (for training on real tissue)
- 1 Training-Kit (rubber ring kit, 1 pair of skin flaps imitations, suture material)

Consumables:



LS 70 Trainings-Kit

Art.-Nr. LS70720

- suture material
- 1 rubber ring set
- 1 pair of skin flaps imitations



Instrument port-Set

Art.-Nr. LS70702

- set includes 7 ports
- easy to replace

We also offer a complete workplace to all training systems



**Workstation Resection
LST-R 2.0**

Art.-Nr. LSTE910

The Workstation-Resection includes a wheeled equipment cart with the respective training device and the following components:

- training camera
(compatible with all standard instruments)
- PC-Monitor
- light source
- fibre light cable (FLC)

This combination is the ideal unit for independent learning and training of a variety of diagnostic and therapeutic tasks in the clinic, and for equipment manufactures to practical product presentation at the client site, at exhibitions or fairs.

**Workstation EndoUro
LST-EU 2.0**

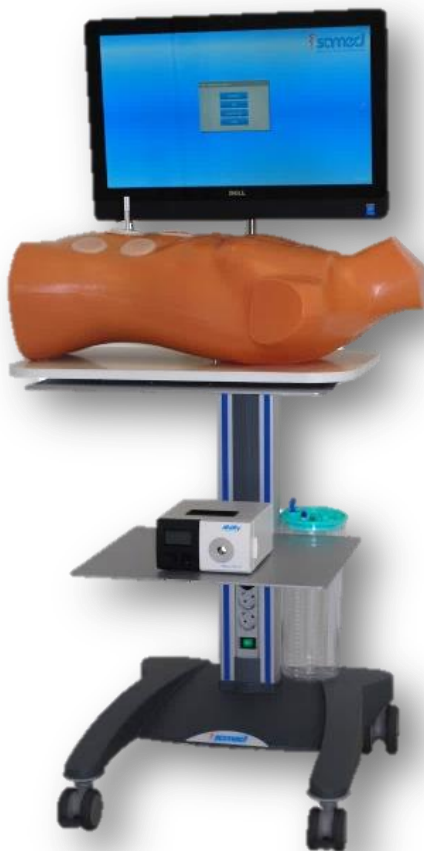
Art.-Nr. LSTL911

The Workstation-EndoUro includes a wheeled equipment cart with the respective training device and the following components:

- training camera
(compatible with all standard instruments)
- PC-Monitor
- light source
- fibre light cable (FLC)

This combination is the ideal unit for independent learning and training of a variety of diagnostic and therapeutic tasks in the clinic, and for equipment manufactures to practical product presentation at the client site, at exhibitions or fairs.





Workstation Laparoscopy
LST-L 2.0

Art.-Nr. LSTL912

The Workstation-Laparoscopy includes a wheeled equipment cart with the respective training device and the following components:

- training camera
- PC-Monitor
- in the trainer integrated light source

This combination is the ideal unit for independent learning and training of a variety of diagnostic and therapeutic tasks in the clinic, and for equipment manufactures to practical product presentation at the client site, at exhibitions or fairs.

Workstation PCNL
LST-P 2.0

Art.-Nr. LSTL913

The Workstation-PCNL includes a wheeled equipment cart with the respective training device and the following components:

- training camera
(compatible with all standard instruments)
- PC-Monitor
- light source
- fibre light cable (FLC)

This combination is the ideal unit for independent learning and training of a variety of diagnostic and therapeutic tasks in the clinic, and for equipment manufactures to practical product presentation at the client site, at exhibitions or fairs.





Workstation Universal LST-U 2.0

Art.-Nr. LSTU914

The Workstation Universal includes a wheeled equipment cart with the respective training devices

- LS 10-S
- LS 40-S
- LS 50-S
- LS 70-S

In addition, following components are included:

- training camera
(compatible with all standard instruments)
- PC-Monitor
- light source
- fibre light cable (FLC)

This combination is the ideal unit for independent learning and training of a variety of diagnostic and therapeutic tasks in the clinic, and for equipment manufactures to practical product presentation at the client site, at exhibitions or fairs.

**Samed GmbH Dresden**

Bamberger Straße 7
01187 Dresden
GERMANY

CEO: Dr. Klaus Forke

Tel.: +49 (0) 351 862 62 61
Fax: +49 (0) 351 453 96 59
www.samed-dresden.de
e-Mail: info@samed-dresden.de
Commercial register: HRB 7152

Amtsgericht Dresden
St. Nr.: 203 118 04465
USt.-IdNr.: DE 151 798 199